

CERTIFIED LAND CORNER RECORDATION

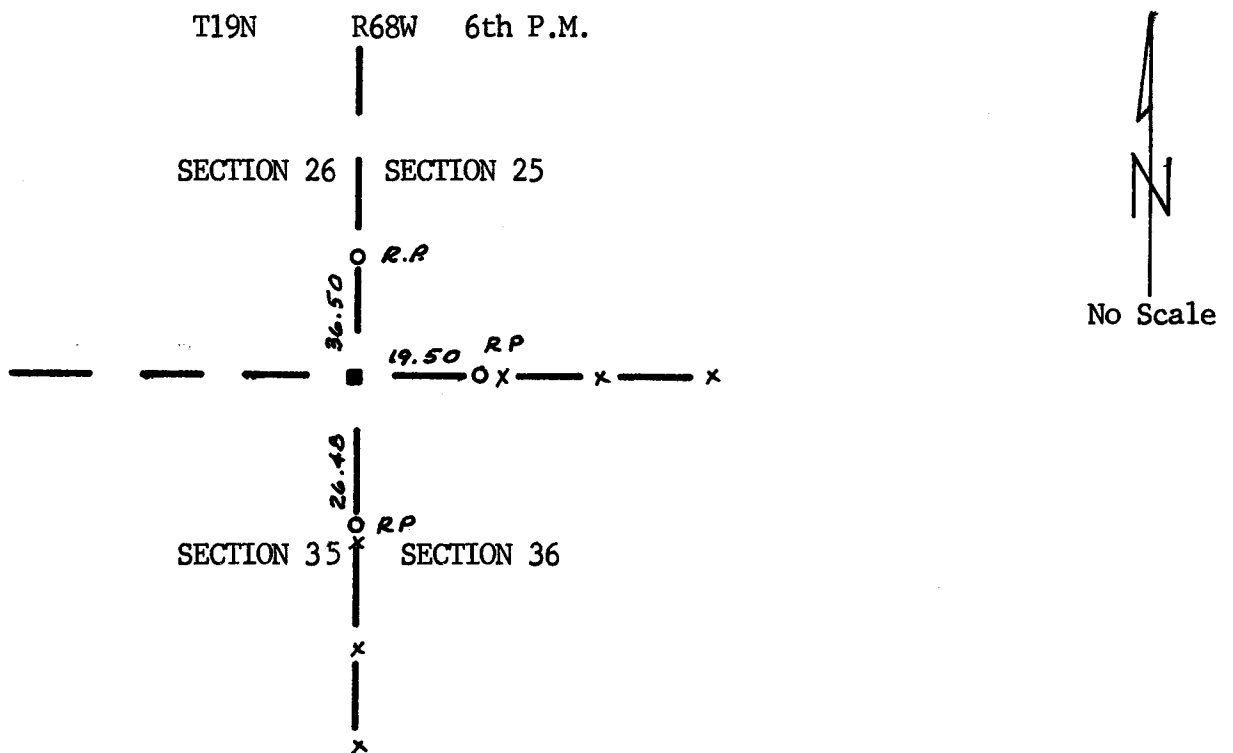
DESCRIPTION OF CORNER EVIDENCE FOUND, AND ORIGINAL RECORD (if known)

Found 15" X 14" X 10" gray stone at west side of fence corner post with 1/2" rebar at west face.

DESCRIPTION OF MONUMENT AND ACCESSORIES ESTABLISHED TO PERPETUATE THE ORIGINAL LOCATION OF THIS CORNER:

See sketch below.

SKETCH, WITH COURSE AND DISTANCE TO ADJACENT CORNER IF DETERMINED IN THIS SURVEY.
(May Sketch or Paste Reproduction on Reverse Side.)



I, Albert L. Scott certify that I have carefully performed or reviewed the work done on the diagrammed corner as reported on this recordation form and approve the same.

Albert L. Scott L.S. 2573
Signature of Surveyor Registration No.

STATE OF WYOMING,
Office of Clerk and Recorder,
County of _____

567571

This "corner record" was filed for record on the _____ day of FEB 12 1980, 19____, was noted on the cross-index plat and is assigned page No. _____, in book No. _____.

James C. Whitehead
County Official 6th P.M.

Cross Index No.	<u>V 21</u>	T.	<u>19N</u>	R.	<u>68W</u>	Mer.
		T.		R.		Mer.
		T.		R.		Mer.
		T.		R.		Mer.
		T.		R.		Mer.
		T.		R.		Mer.
		T.		R.		Mer.

V-21 19-68